

Contact us

ABB S.p.A.
Electrification Business
Viale dell'Industria, 18
20009 Vittuone (MI) Italy
<https://new.abb.com/low-voltage>



Warning! Installation by person with
electrotechnical expertise only.
Warnung! Installation nur durch
elektrotechnische Fachkraft.
Avvertenza! Fare installare solo da un
elettricista qualificato.

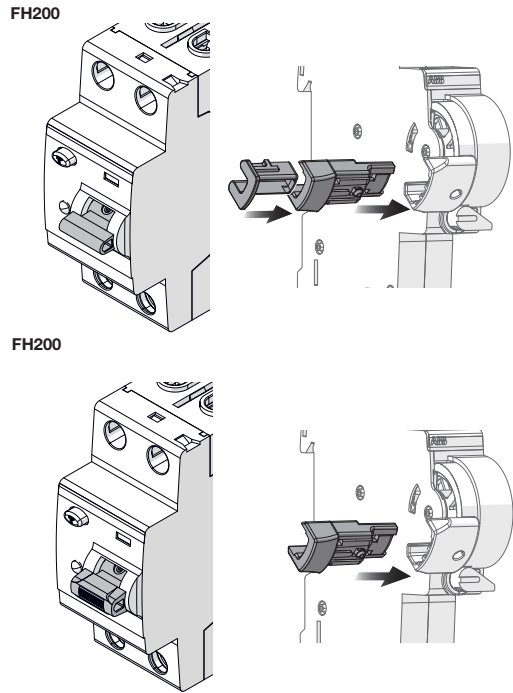
© Copyright 2023 ABB S.p.A. All rights reserved.
Specification subject to change without notice.

1.Packaging Content

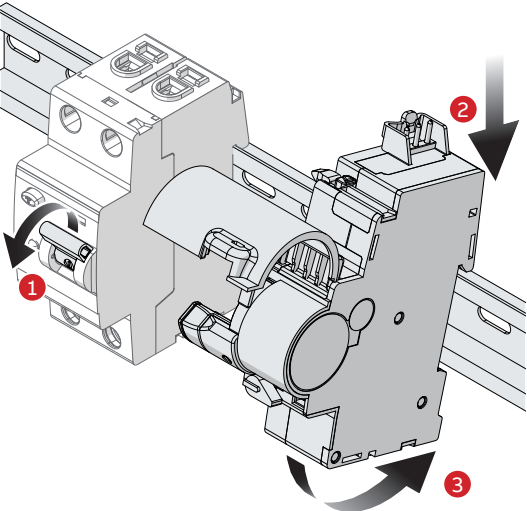
- Autoreclosing device
- Installation manual
- Toggle adapters
- Safety sticker

2.Mounting

2.1.Toggle adapter



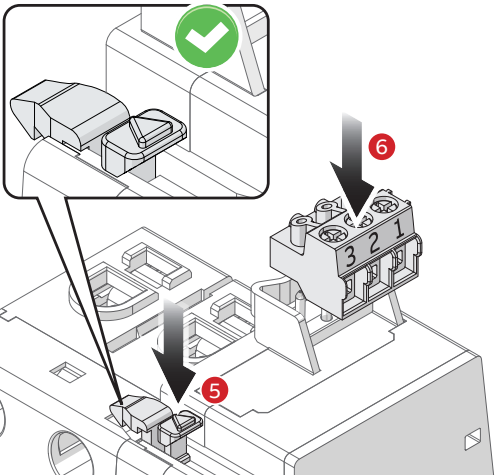
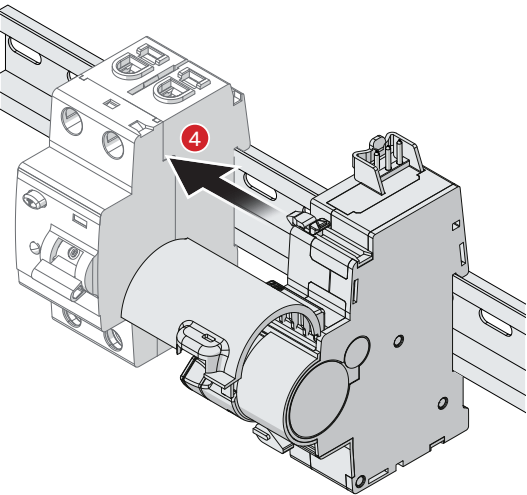
2.2.Assembly



December 2024
2CSS490014D1005

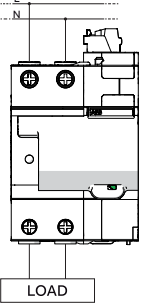
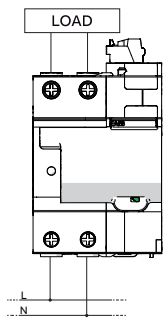
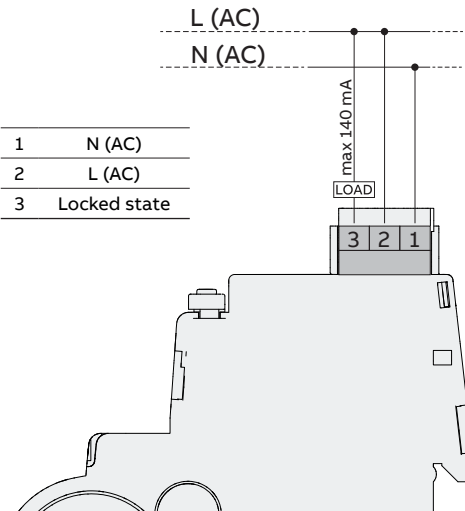
Autoreclosing unit
INSTALLATION
AND
OPERATING
INSTRUCTIONS

F3C-AR230 C 2/30 H
F3C-AR230 C 2/300 H
F3C-AR230 C 4/30 H
F3C-AR230 C 4/300 H

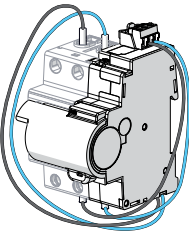


Operate toggle OFF-ON-OFF to verify proper assembly

2.3.Wiring Diagram

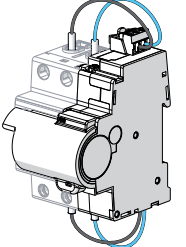


Integrated wires for
assessment



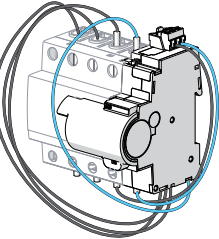
Power supply
from line side

Power supply from
line side

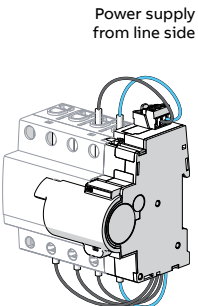


Integrated wires for
assessment

Integrated wires
for assessment

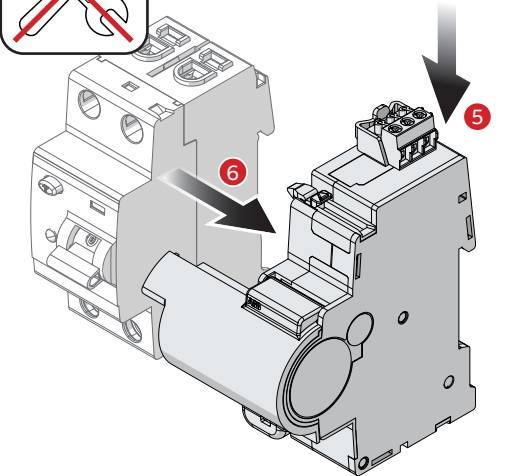
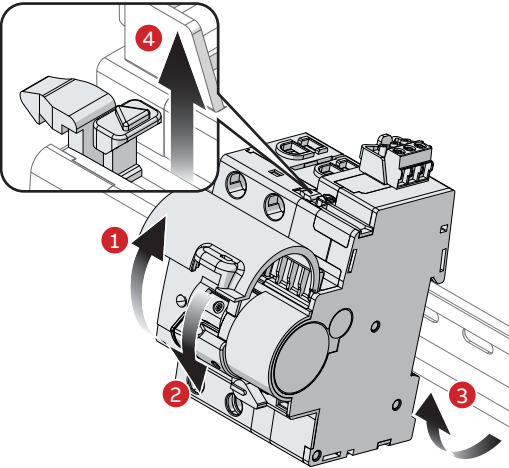


Power supply
from line side



Integrated
wires for
assessment

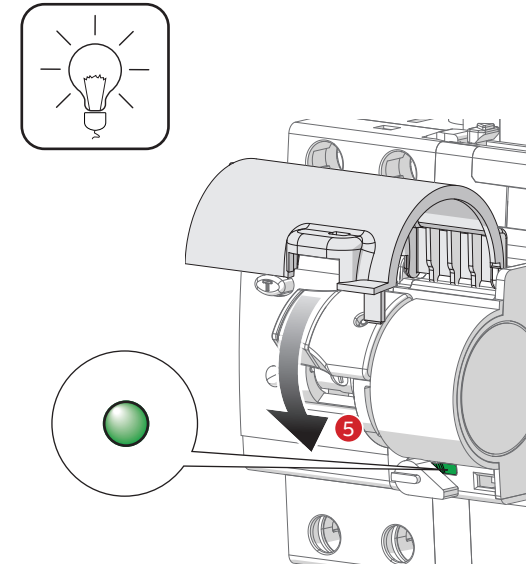
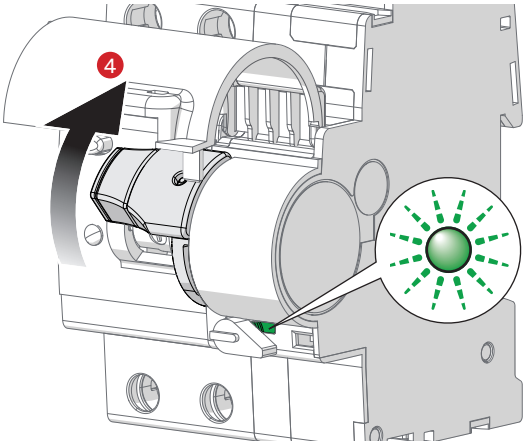
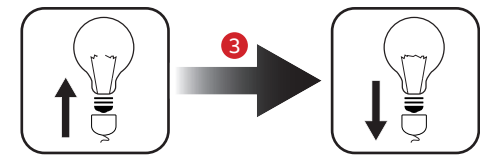
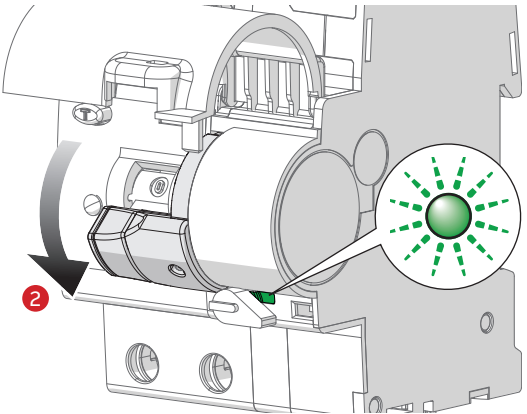
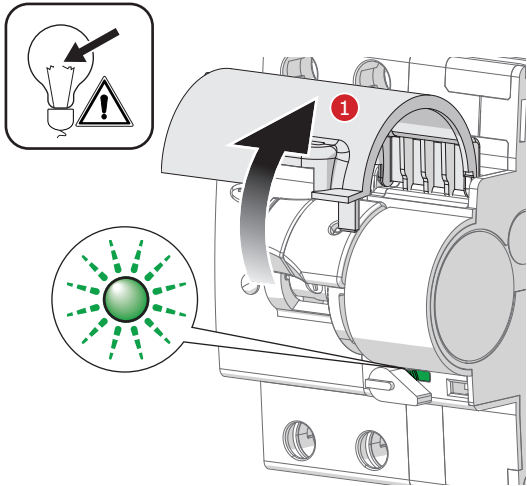
3.Dismounting



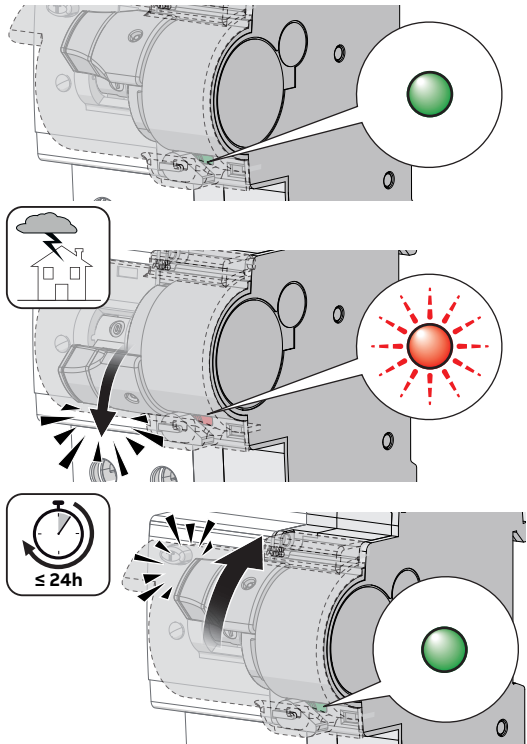
4.Operations

4.1. Disconnection of installation

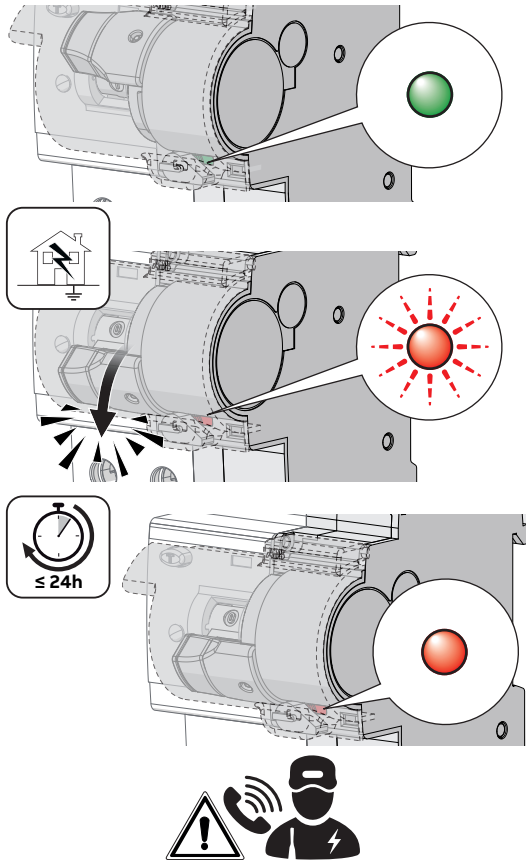
Warning: before accessing active parts, disable the automatic re-closing function and switch off the main protection device.



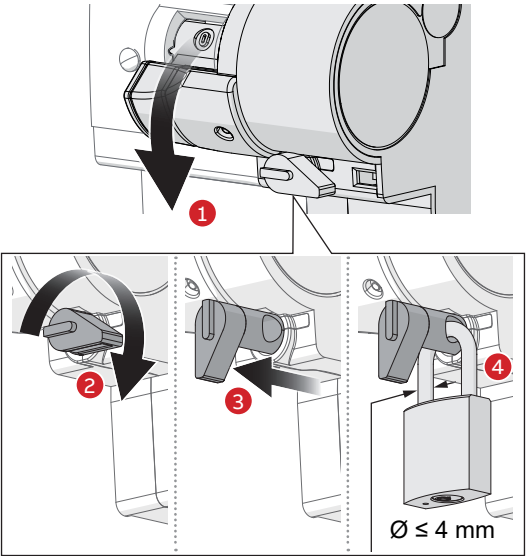
4.2. Temporary fault



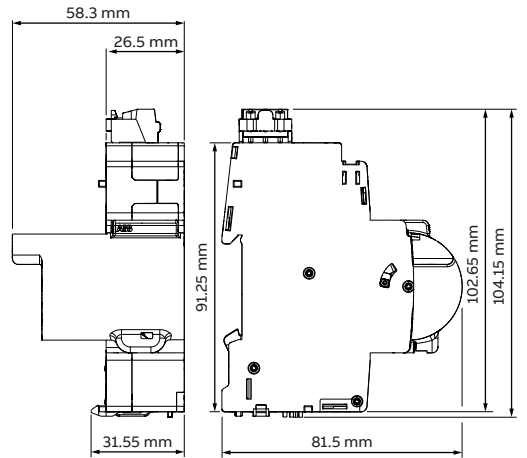
4.3. Permanent earth fault



5.Locking in isolating state



6.Dimensional drawings



7.Technical Data

	F3C- AR230 C 2/30 H	F3C- AR230 C 2/300 H	F3C- AR230 C 4/30 H	F3C- AR230 C 4/300 H
Rd0 (rated non operating resistance between live parts and earth)	8 kΩ	800 Ω	8 kΩ	800 Ω
Rd (rated operating resistance between live parts and earth)	22 kΩ	8 kΩ	22 kΩ	8 kΩ
Earthing system	TT-TN			
Standard:	IEC63024 EN 63024			
	RCCBs FH200 (up to 63A, A and AC types)			
Suitable for:	2P, 230 V, 30 mA	2P, 230 V, 300 mA	4P, 400 V, 30 mA	4P, 400 V, 300 mA
Number of modules	1,5			
Operating voltage	230-240 V AC (-15% +10%)			
Automatic reclosure after untimely tripping	Yes (up to 24 hours after the fault) System check: 1st time: ≈ 3 seconds 2nd time: ≈ 2 minutes 3rd time: ≈ 5 minutes 4th time to 48th time: ≈ 30 minutes			
Earth leakage check	Yes			
Max number of consecutive automatic reclosure attempts	48			
Reset time for counter of automatic reclosing attempts	45 s			
Power consumption during operation	<26 VA			
Power consumption at rest	<1,5 VA			
Closing time	<1 s			
Opening time	<1 s			
Protection degree acc. To EN 60529	IP40 (housing)/IP20 (terminals)			
Operating temperature	-5 ...+40 °C			
Storage temperature	-40 ...+70 °C			
Overvoltage category	III			
Pollution degree acc. to EN 60664	2			
Shock resistance acc. to IEC/EN 60068-2-27	25g, 2shocks, 13ms			
Vibration resistance acc. to IEC/EN 60068-2-6	1g - 20 cycle at 5... 150 ...5 Hz			
Environmental conditions (damp heat) acc. to IEC/EN 60068-2-30	28 cycles with 55°C/90-96% and 25°C/95-100%			
Terminal type	plug-in			
Cross-section of conductors	0,2...2,5 mm²			
Tightening torque	0,4 Nm			
Stripping length of the cable	5 mm			
Locked state	Terminal 3			